

SERENITY

74" by 74"



*Design by Denice Lipscomb
Common Threads Quilting
Waxahachie, Texas
Commonthreadsquilting.com
972-935-0510 © 2015*

Fabric Requirements

Serenity

(in yards)



Background
 $4\frac{1}{4}$



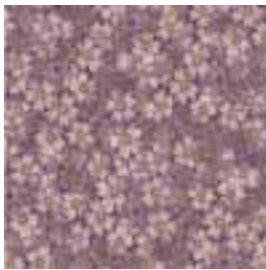
Black Floral
 $\frac{5}{8}$



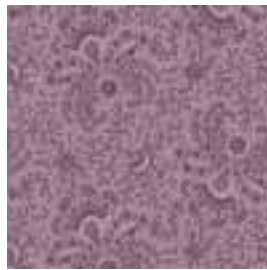
Green Tone
 $\frac{1}{8}$



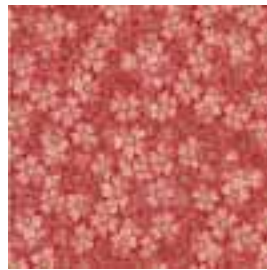
Green Leaf
 $\frac{1}{4}$



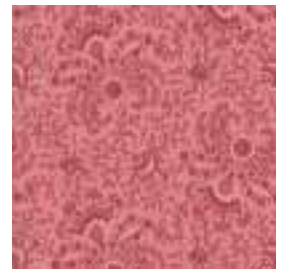
Purple Floral
 $\frac{1}{8}$



Purple Tone
 $\frac{1}{8}$



Pink Floral
 $\frac{1}{4}$



Pink Tone
 $\frac{1}{8}$



Pale Pink
 $\frac{1}{4}$



White Floral
 $\frac{1}{8}$



Black Leaf
 $\frac{1}{8}$



Teal Floral
 $1\frac{1}{4}$

Binding
 $\frac{5}{8}$



Border
 $1\frac{1}{4}$

Backing
 $4\frac{3}{4}$

SERENITY

Month 1

9 inch finished block



*Design by Denice Lipscomb
Common Threads Quilting
Waxahachie, Texas
Commonthreadsquilting.com
972-935-0510 © 2015*

Serenity

Month 1

Cutting Instructions:

Background:

- Cut 1: $2\frac{5}{8}$ inch square
- Cut 4: $2\frac{1}{2}$ inch squares
- Cut 16: 2 inch squares

Pink Tone:

- Cut 2: $2\frac{3}{8}$ inch squares:
 - * Cut each square diagonally once to make 4 triangles
- Cut 4: 2 by $3\frac{1}{2}$ inch rectangles

Black Floral:

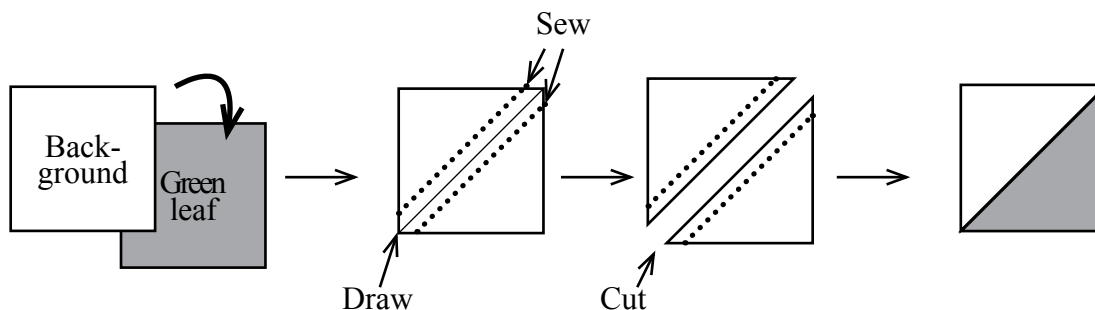
- Cut 1: strip 2 inches by width of fabric:
 - * Subcut into:
 - ◇ 8: 2 inch squares
 - ◇ 4: 2 by $3\frac{1}{2}$ inch rectangles

Green Leaf:

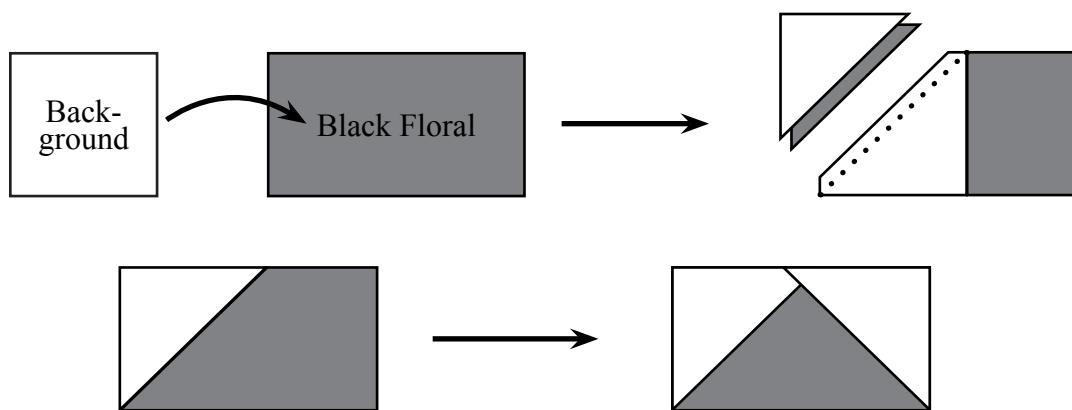
- Cut 4: $2\frac{1}{2}$ inch squares

Sewing Instructions:

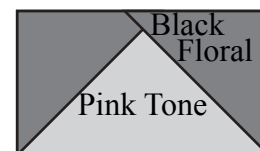
- Make 8 half square triangles using 4 background $2\frac{1}{2}$ inch squares and 4 green leaf $2\frac{1}{2}$ inch squares, as shown in the diagram below
 - * Place a background $2\frac{1}{2}$ inch square on a green leaf $2\frac{1}{2}$ inch square, right sides together
 - * Draw a line diagonally across the square
 - * Sew $\frac{1}{4}$ inch on either side of the line
 - * Cut on the line which was previously drawn
 - * Press to the green leaf
- Square each half square triangle up to 2 inches. Note that the squares used to make half square triangles result in a half square triangle that is slightly larger than the final unit. This is to allow “squaring up” to the exact dimension



- Make 4 flying geese using 4 black floral 2 by 3½ inch rectangles and 8 background 2 inch squares, as shown in the diagram below
 - * Place a background 2 inch square on the left side of a black floral rectangle
 - * Draw a line from point to point starting on the inside point of the square
 - * Sew on the line
 - * Trim to ¼ inch of the seam
 - * Press to the background
 - * Repeat the procedure on the right side of the rectangle
- Each unit should measure 2 by 3½ inches

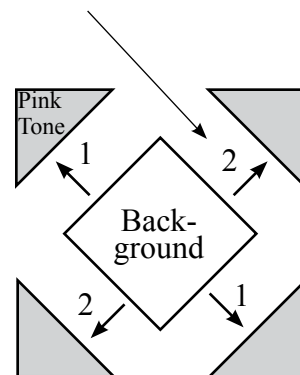


- In similar fashion to the last step and as shown to the right, make 4 flying geese using 4 pink tone 2 by 3½ inch rectangles and 8 black floral 2 inch squares
- Press to the black floral
- Each unit should measure 2 by 3½ inches

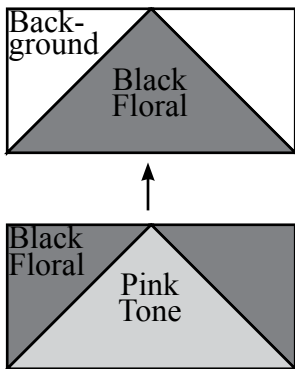
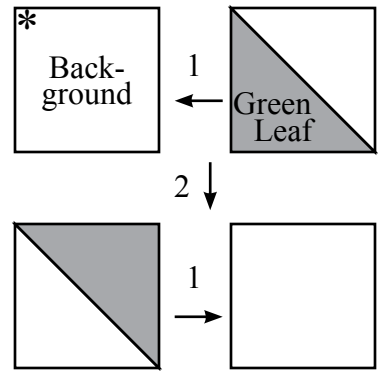


See note about pressing directions

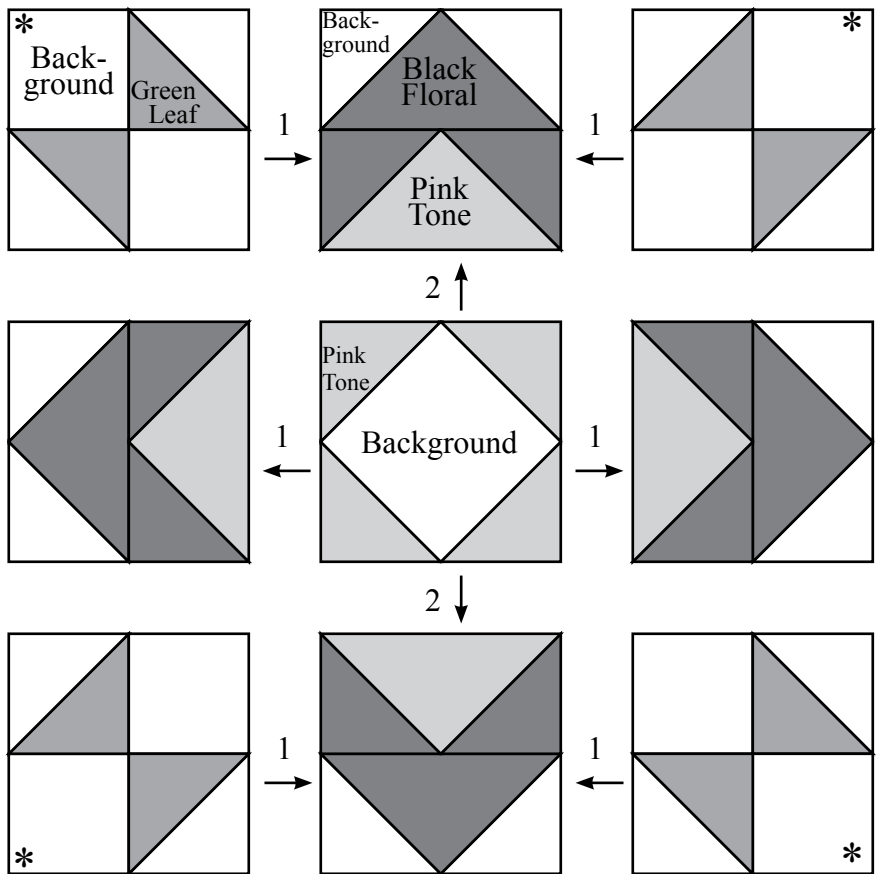
- Make one unit as shown to the right
- The unit will use:
 - * The background 2⅝ inch square
 - * 4 pink tone triangles
- The order of sewing is indicated by the numbers next to the arrows. All “1’s” are sewn first and then all “2’s” are sewn next, etc
- **For those who wish to side press, the direction to press** is indicated by the head of the arrow as viewed from the front (“right”) side of the fabric. This convention will be used throughout the patterns
- The unit should measure 3½ by 3½ inches



- Make 4 units as shown to the right
- Each unit will use:
 - * 2 background 2 inch squares
 - * 2 green leaf/background half square triangles
- Mark each unit in the upper left corner as shown so that seams will lock when later sewn in the block
- Each unit should measure 3½ by 3½ inches



- Make 4 units as shown to the left
- Each unit will use:
 - * 1 black floral/background flying geese
 - * 1 pink tone/black floral flying geese
- Each unit should measure 3½ by 3½ inches



- Assemble the block as shown to the right
- Orient the corner units as shown with respect to their previously marked corners
- The block should measure 9½ by 9½ inches